

SURFACE PROTECTION

- | Carpet, Vinyl, Timber, Tile Floor
- | Joinery & Bench Top Protection
- | Glass Balustrade / Jamb Protection
- | Dust Control & Management
- | Taping & Accessory Products
- | Zip-wall & Interior Site Hoardings



I SITE SHIELD - CORFLUTE**SHEETS**

| SKU: | SIZE: | WIDTH: | QTY: |
|---------------|-------------|--------|------|
| 6131-CF121205 | 1.2m x 1.2m | 5mm | 20pk |
| 6131-CF221203 | 2.2m x 1.2m | 3mm | 20pk |
| 6131-CF221205 | 2.2m x 1.2m | 5mm | 10pk |

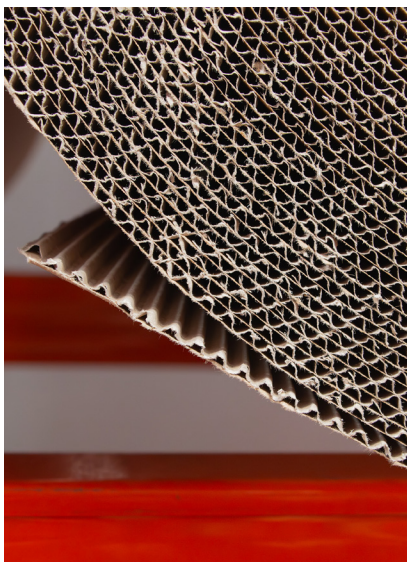
ROLLS

| SKU: | SIZE: | WIDTH: |
|------------------|------------|--------|
| 6131-CFR1220-2.5 | 1.2m x 20m | 2.5mm |
| 6131-CFR1250-2.5 | 1.2m x 50m | 2.5mm |

**I CORRUGATED CARDBOARD**

| SKU: | ROLL SIZE: | AREA: |
|------|------------|------------------|
| 4020 | 1.2m x 75m | 90m ² |

- For protecting delicate wall panelling or painting finishes

**I SITE SHIELD - HIGH DENSITY CARDBOARD FLOOR COVER**

| SKU: | ROLL SIZE: | AREA: |
|-----------|----------------|--------------------|
| 6131-BB30 | 965mm x 30.48m | 29.4m ² |

- Moisture-resistant
- Effective protection against impact and abrasion
- No sawing needed; can be cut with a heavy-duty knife

**I SITE SHIELD - RUBBER SURFACE PROTECTION**

| SKU: | ROLL SIZE: |
|-----------------|------------|
| 6131-AM1015-1.5 | 1.5m x 15m |

- Effective protection against impact and abrasion
- Waterproof nature ensures protection against liquid or moisture damage

**I SITE SHIELD - CARPET PROTECTION FILM**

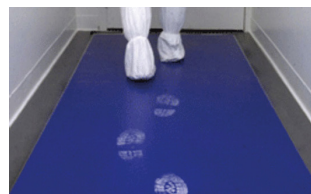
| SKU: | ROLL SIZE: | THICKNESS: | AREA: |
|--------------|------------|------------|-------------------|
| 6131-CPF1000 | 1m x 100m | 80 micron | 100m ² |

- Reverse rolled for quick installation
- Use for carpet protection during construction, fit-outs, and renovations

**I SITE SHIELD - STICKY DUST MAT**

| SKU: | SIZE: |
|--------------|---------------|
| 6131-SM6090B | 600mm x 900mm |

- 30 tear-away layers
- Low profile allows under-door use

**I SITE SHIELD - POLYWEAVE CARPET COVER**

| SKU: | ROLL SIZE: | THICKNESS: | AREA: |
|------------|------------|------------|-------------------|
| 6131-PW250 | 2m x 50m | 100 micron | 100m ² |

- Double-laminated interwoven reinforcement to prevent ripping
- White and blue-coloured surfaces



I TAPE

PVC DUCT TAPE

| SKU: | SIZE: | QTY: |
|---------------|------------|------|
| 6133-PT4830BK | 48mm x 30m | 24pk |



CLOTH TAPE

| SKU: | SIZE: | QTY: |
|---------------|------------|------|
| 6133-CT4830BL | 48mm x 30m | 30pk |
| 6133-CT4830YL | 48mm x 30m | 30pk |



AISLE MARKING CLOTH TAPE

| SKU: | SIZE: | TYPE: | QTY: |
|---------------|------------|-------|------|
| 6133-AMCTBY48 | 48mm x 30m | B/Y | 30pk |
| 6133-AMCTBY96 | 96mm x 30m | B/Y | 30pk |
| 6133-AMCTRW48 | 48mm x 30m | R/W | 30pk |



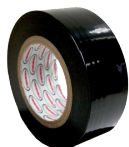
PVC LOW TAC TAPE

| SKU: | SIZE: | QTY: |
|---------------|------------|------|
| 6133-LT4833OR | 48mm x 33m | 48pk |
| 6133-LT4855OR | 48mm x 55m | 24pk |



ALUMINIUM PROTECTION TAPE

| SKU: | SIZE: |
|-----------------|-------------|
| 6133-APT10066BK | 100mm x 66m |



KWIKMASK PREMIUM MASKING TAPE

| SKU: | SIZE: |
|---------------|------------|
| 6133-PMTG4850 | 48mm x 50m |



I SITE SHIELD - FLOOR SENSITIVE SHIELD

| SKU: | ROLL SIZE: | THICKNESS: |
|-------------|------------|------------|
| 6131-FS3012 | 1m x 30m | 3mm |

- Impregnated plastic membrane to create a water barrier



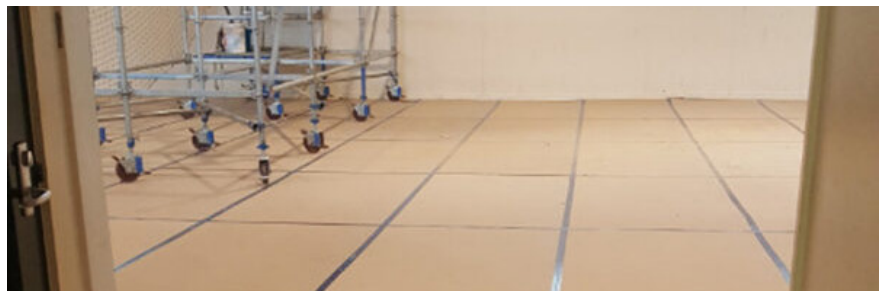
I ECOTEX - RECYCLABLE TEXTILES

| SKU: | SIZE: | TYPE: | THICKNESS: |
|-----------------|-------------|-------|------------|
| 6131-ETX241203 | 1.2m x 2.4m | Sheet | 3mm |
| 6131-ETX241205 | 1.2m x 2.4m | Sheet | 5mm |
| 6131-ETX241210 | 1.2m x 2.4m | Sheet | 10mm |
| 6131-ETX1090015 | 9m x 15m | Roll | 10mm |



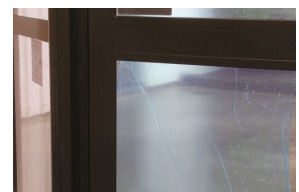
I MDF BOARD

| SKU: | SIZE: | TYPE: | THICKNESS: |
|------------|-------------|-------|------------|
| AM-MDF | 1.2m x 2.4m | Sheet | 3mm |
| AM-MDF-6MM | 1.2m x 2.4m | Sheet | 6mm |



I WINDOW PROTECTION FILM

| SKU: | THICKNESS: | ROLL SIZE: |
|---------|------------|------------|
| WPF1000 | 50 micron | 1m x 100m |



I CONTACT SPRAY ADHESIVE

| SKU: | SIZE: | QTY: |
|----------|-------|------|
| 03SS24AC | 500ml | 12pk |

- Fast drying
- Good strength and high heat resistance
- Suitable for upholstery, foam and carpet



BRUTE BOARD

HIGH IMPACT PROTECTION BOARD

- | FELT BACKING TO PREVENT SURFACE ABRASION
- | HIGH IMPACT/CRUSH-RESISTANCE
- | ANTI-SLIP SURFACE

Powerpac's Brute Board is designed to safeguard floors and surfaces from high-traffic areas, heavy equipment, and debris. The protection board can withstand impacts from forklifts, EWP's, and other heavy lifting equipment.

Commonly used to protect doors, floors, walls, and countertops, the bonded felt underlay provides extra protection to easy-to-damage surfaces. It is extremely lightweight and easy to transport. The Brute Board is also waterproof and impact-resistant, suitable for outdoor environments.

Suitable for construction sites, renovations, or protecting surfaces during transportation. This reliable product will save you time, money, and effort.

| | |
|------------|-----------------|
| SKU: | 6131-BB2212 |
| SIZE: | 2.2m L x 1.2m W |
| THICKNESS: | 5mm |
| GSM: | 1500 |

KEY BENEFITS:

- High-strength bubble cell structure
- Durable, lightweight & reusable
- Anti-Slip surface
- Water Resistance & 12 month UV protection
- Felt backing eliminates surface abrasion

APPLICATIONS:

- Tile, stone, marble, epoxy, vinyl or timber floors
- Interior and exterior surfaces
- Surfaces like lift interiors, tread and stair nosings



I SITE SHIELD - POLY FOAM

| SKU: | ROLL SIZE: |
|-----------------|-------------------|
| 6131-SSPF212100 | 1.2m x 100m x 2mm |



I BUBBLE WRAP

| SKU: | WIDTH: | LENGTH: |
|-------|--------|---------|
| 91808 | 900mm | 100m |



I DISPOSABLE SHOE COVERS

| SKU: | QTY: |
|-------------|-------|
| 6131-DSC100 | 100pk |

Non-skid



I SITE SHIELD - DOOR JAMB & EDGE PROTECTORS

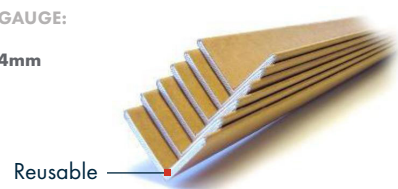
| SKU: | LENGTH: | INSIDE DIAMETER: |
|------------|---------|------------------|
| 6131-FT80 | 1.95m | 80mm |
| 6131-FT120 | 1.95m | 120mm |



I CARDBOARD CORNER PROTECTOR

| SKU: | SIZE: | GAUGE: |
|------------|------------------|--------|
| 6131-AM100 | 2m x 60mm x 60mm | 4mm |

- Protects from impacts caused by trolleys, barrows etc



Reusable

I POLYTHENE SHEETING

| SKU: | SIZE: | THICKNESS: |
|------|-------|------------|
|------|-------|------------|

BLACK

| | | |
|-----------------|----------|------------|
| 44-BLACKPLAS | 4m x 25m | 250 micron |
| 44-BLACKPLAS-50 | 4m x 50m | 250 micron |

CLEAR

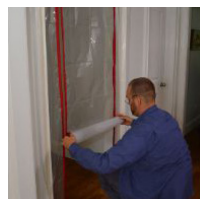
| | | |
|----------------|----------|------------|
| 6131-CPS425020 | 4m x 25m | 200 micron |
| 6131-CPS450 | 4m x 50m | 50 micron |
| 6131-CPS450250 | 4m x 50m | 250 micron |



I ZIPWALL - TEMPORARY DUST BARRIER SCREEN SOLUTIONS

| SKU: | PRODUCT: | SIZE: |
|--------|---------------------------------------|---------------|
| SLP6 | Spring Loaded Poles - 6pk | 1.4m - 3.7m |
| ZD37 | ZipDoor Standard | 914mm x 2.13m |
| ZD48FR | ZipDoor Commercial | 1.22m x 2.44m |
| HDAZ2 | Heavy Duty Self Adhesive Zipper - 2pk | N/A |

- Ideal for sealing off a hallway, doorway or room
- The poles can be placed 2.5m to 3m apart. If there is any significant air movement that pushes the plastic, it is advisable to place them closer together



FREE DOWNLOAD

Check out our Buyer's Guides, Solutions Flyers and Product Deals Online

SITE SHIELD

Surface Protection Solutions

0800 23 57 89 | www.powerpac.co.nz

| | CARPET | VINYL | TIMBER | POLISHED CONCRETE | TILES | GLASS | ALUM JOINERY | PAINTED SURFACES | CLT & LVL TIMBER |
|--|--------|-------|--------|-------------------|-------|-------|--------------|------------------|------------------|
|  Corflute Sheeting | | | ■ | | | ■ | ■ | ■ | ■ |
|  Corrugated Cardboard | ■ | ■ | ■ | ■ | ■ | | | | |
|  Grey Rhino Poly Foam | | | | | ■ | | | | ■ |
|  High Density Cardboard | ■ | ■ | ■ | ■ | ■ | ■ | ■ | ■ | ■ |
|  Rubber Surface Protection | | ■ | | | ■ | | | | |
|  Carpet Protection Film | ■ | | | | | | | | |
|  Sticky Dust Mat | ■ | | | | | | | | |
|  Polyweave Carpet Protection | ■ | | | | | | | | |
|  Floor Sensi Shield | | ■ | | | ■ | | | | ■ |
|  Ecotex - Recyclable Textiles | | | | ■ | ■ | ■ | ■ | ■ | ■ |
|  MDF Board | | | ■ | ■ | ■ | | | | |
|  Ground Protection Mat | ■ | ■ | ■ | ■ | ■ | | | | |
|  Window Protection Film | | | | | | ■ | | | |
|  Poly Foam | | ■ | | | | | | ■ | |
|  Bubble Wrap | | | | | | ■ | | | |
|  Polythene Sheeting | | | | | | | | ■ | |
|  Brute Board | | ■ | ■ | ■ | ■ | ■ | | ■ | |
|  PVC Duct Tape | | ■ | | | | | ■ | | |
|  Cloth Tape | ■ | | | ■ | ■ | | | | |
|  Low Tac Tape | | ■ | ■ | ■ | ■ | ■ | ■ | ■ | ■ |
|  Foam Tube Protection | | | | | | ■ | ■ | | ■ |
|  Cardboard Corner Protector | | | | | | ■ | ■ | | |

Call us **0800 23 57 89** or Email sales@powerpac.co.nz

I HOARDFAST - FREE STANDING HOARDING

HoardFast, a sleek and professional hoarding system. This system boasts 1.2m wide panels that vary in height from 2.4m to 3.6m. It's versatile enough to be erected as a freestanding hoarding up to 3.6m using support posts and base weights, or as a floor-to-ceiling wall up to 5.4m.

The panels can also be installed on their side to create a low-height hoarding solution of 1.2m.

The panels are easy to install and can be set up by one or two people. HoardFast comes with a range of joiners and accessories, allowing you to create any hoarding configuration required for your project.

It's a highly sought-after system for freestanding installations, especially in high-end construction projects such as airports and shopping centres, thanks to its high-gloss and graffiti-repellent finish.



PVC PANEL

| SKU: | LENGTH: | WIDTH: | DEPTH: |
|------------|---------|--------|--------|
| HPP120-200 | 2m | 1.2m | 35mm |
| HPP120-240 | 2.4m | 1.2m | 35mm |
| HPP120-300 | 3m | 1.2m | 35mm |
| HPP120-400 | 4m | 1.2m | 35mm |
| HPP120-480 | 4.8m | 1.2m | 35mm |



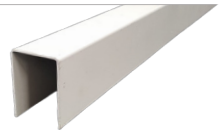
JOINER POST

| SKU: | LENGTH: |
|--------|---------|
| HPJ200 | 2m |
| HPJ240 | 2.4m |
| HPJ275 | 2.75m |
| HPJ400 | 4m |



ALUMINIUM U CHANNEL

| SKU: | LENGTH: | FIXING: |
|--------|---------|---------------|
| HPU300 | 3m | Top or Bottom |



CORNER PROFILE

| SKU: | LENGTH: |
|---------|-----------|
| HPC-M | Per metre |
| HPC3000 | 30m |



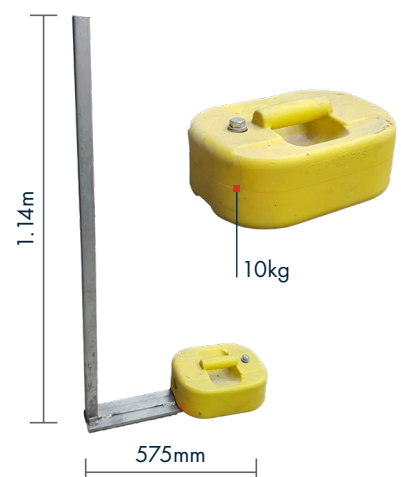
I BASE PLATE & POST

STEEL BASE PLATE & SUPPORT POST

| SKU: | HEIGHT: | LENGTH: |
|--------|---------|---------|
| HBP115 | 1.14m | 575mm |

STACKABLE BASE WEIGHT

| SKU: | SUITS: |
|-------|-----------------------|
| HBW15 | Support Post (HBP115) |



ORDER ONLINE POWERPAC.CO.NZ

FASTWALL - SLAB TO CEILING FIXED HOARDING

FastWall is preferred by many businesses in construction and fitout industries because of its convenience in handling, cutting, quick installation, and relocation.

The panels are 300mm wide and vary in height from 2.4m to 4.8m, enabling the creation of walls up to 7.2 metres high.

The tongue and groove design allows for fast and easy installation and removal without requiring joiners.

The PVC panels are available in white and black and are easy to clean, hygienic, and durable.

They are perfect for site amenities like washrooms, changing rooms, lunchrooms, site offices, and hoardings within work zones.



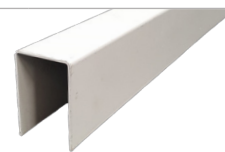
FASTWALL STANDARD PANEL

| SKU: | PANEL WIDTH: | LENGTH: | FINISH: |
|----------|--------------|----------|---------|
| HFWS1000 | 300mm | Up to 6m | Fluted |



TOP TRACK

| SKU: | WIDTH: | QTY: | MATERIAL: |
|------------|--------|----------|-----------|
| HFWTAL30 | 30mm | Per 3m | Aluminium |
| HFWTPVC5.8 | 30mm | Per 5.8m | PVC |



BOTTOM TRACK

| SKU: | WIDTH: | QTY: | MATERIAL: |
|-----------|--------|--------|-----------|
| HFWTBAL30 | 30mm | Per 3m | Aluminium |



90° CORNER JOINTER

| SKU: | QTY: |
|-----------|-----------------|
| HFWPVCCNR | Supplied per 1m |



FASTWALL PREMIUM PANEL

| SKU: | PANEL WIDTH: | FINISH: |
|----------|--------------|---------|
| HFWS2000 | 350mm | Smooth |



PRE HUNG DOOR

| SKU: | WIDTH: | |
|---------|--------|--|
| HFWD00R | 860mm | Supplied with a door latch and lock of your choice |

