



SMARTFORM SACRIFICIAL FORMWORK

- | RAPID INSTALL & BUILD TIME
- | SUPPLIED IN MODULAR & PRE-FORMED PROFILES
- | REDUCED COST & LABOUR

SmartForm

SMARTFORM IS A SACRIFICIAL FORMWORK SHEET

This is a very cost effective & rapid system to create a sacrificial formwork solution, totally adjustable to work around your design parameters.

Eliminates the use of conventional formwork.
We supply the sheets pre-formed to meet your specifications.

Our sheet sizing ranges from 2450-6000mm height and our standard sheet width is 2250mm.

Easy to cut & penetrate for service ducts.

We supply pre-formed ready for install.

Zero stripping or form removal costs.

We offer you a free of charge pricing & scheduling service.

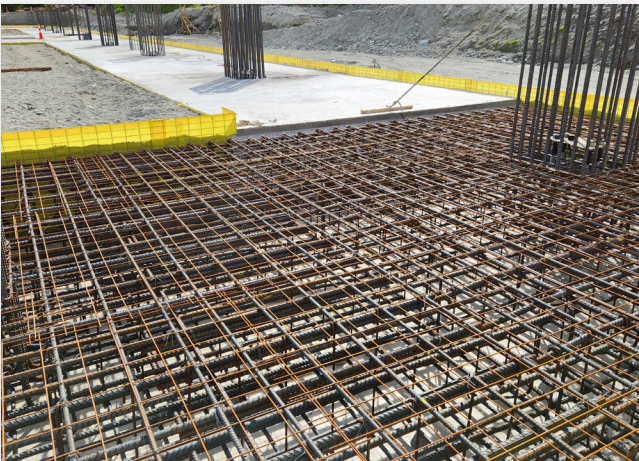
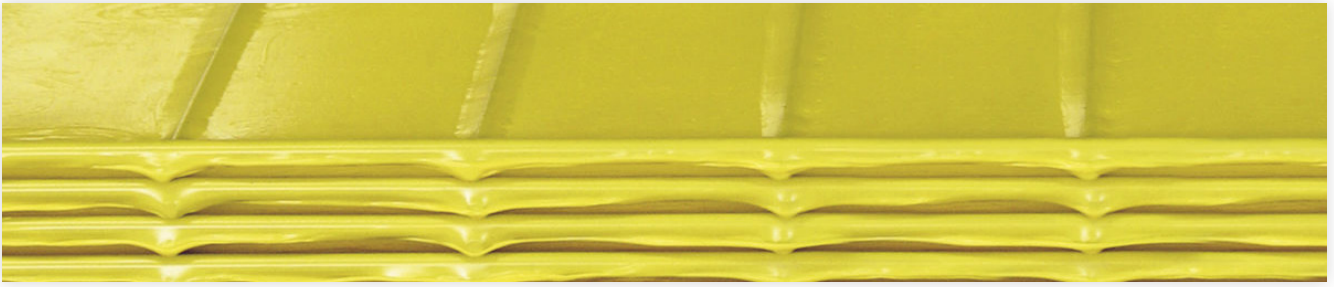
Submit your plans to sales@powerpac.co.nz

ADVANTAGE

- Easy to handle on site using non-specialist labour – reduces construction costs
- No lifting equipment is required because Smartform is light and flexible
- Back fill can be completed before concrete is poured, minimizing safety risks on site
- No need to strip formwork after concrete has been cured
- Quick assembly. No hammer, nails or saws. Only tie-wire is needed
- Formwork can be pre-formed at the factory into virtually any size/ shape required and arrives at site ready for installation
- Supplied as flat sheets – can be cut and fabricated on site, as required
- Versatile – perfect for difficult radius applications
- Lost formwork – no need to excavate a large working space and then refill it later on
- No need to clean or return the formwork
- Non-polluting, non-toxic, and recyclable

CODE:	WIDTH:	LENGTH:
6193-SF245225	2450mm	2250mm
6193-SF240225	2400mm	2250mm
6193-SF180225	1800mm	2250mm
6193-SF150225	1500mm	2250mm
6193-SF120225	1200mm	2250mm
6193-SF90225	900mm	2250mm
6193-SF60225	600mm	2250mm

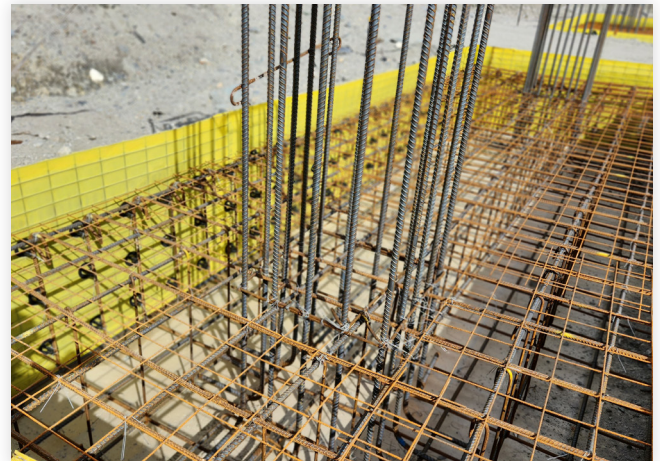




| APPLICATION

THE STRENGTH AND VERSATILITY OF SMARTFORM MAKE IT USEFUL FOR THE FOLLOWING APPLICATIONS:

- **GROUND BEAMS**
- **FOOTINGS AND BASES**
- **PILE CAPS**
- **CONSTRUCTION JOINTS (STOP ENDS)**
- **SPECIAL SHAPES OR CURVES**
- **VOID FORMATION**
- **PENETRATIONS**
- **TEMPORARY FENCING**
- **SAFETY SCREENS**





POWERPAC

| **0800 23 57 89**
|  **sales@powerpac.co.nz**

AUCKLAND
82 McLaughlins Rd, Wiri

| **WELLINGTON**
3 Mohuia Crescent, Elsdon, Porirua

| **CHRISTCHURCH**
115 Hayton Road, Wigram

| **POWERPAC.CO.NZ**