

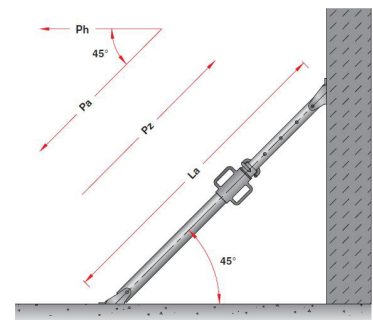
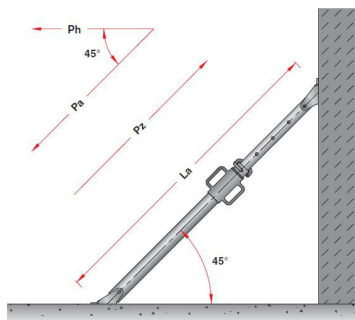
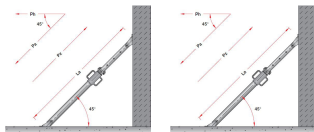
Tilt Panel Prop - 2.4M - 4.1M Size 3

SKU: TB41ZG

Hot Dipped Galv Finish

Made In Italy

2.4m - 4.1m



PRODUCT DESCRIPTION

Double action AC TILT PANEL PROPS

Amadio & C - Tilt Panel props:

The push and pull props derive from class B taking all their security features and load capacity. By working both in compression and in traction they resolve Foto-TP-Ain an economical way all problems of implementation of the vertical forming and of the wood panels then ensuring their stability during concrete pouring. They are also useful in the field of prefabrication by stabilizing the vertical walls during assembly.

FEATURES:

- Max extension: 2.4m - 4.1m
- Inner/outer tube: steel grade S235JRh following UNI EN 10219- 1/2; inner tube Ø48 3 mm (1 1/2") outer tube Ø57/60 3 mm (13/4")/(2");

- Adjustment: sleeve or self cleaned external thread;
- Un-loosable pin rounded ending
- SHAPED PIN - Placing of the pin into the holes is easier and safer
- HAND SAFETY SYSTEM - When the prop is closed there is a minimum of 100mm of free length if the internal tube to avoid crushing the operators hand
- PUNCHED HOLES - The absence of processing burrs guarantees perfect functionality even after many uses.
- Supplied fully hot dip galvanised
- Winder nuts have machined flats for hard turn adjustment by hammer
- Unique pin design for easy and safe installation
- Forged steel winder nut to eliminate fracturing