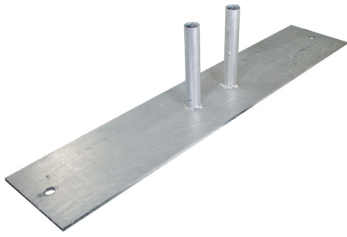


Steel Temporary Fence Foot - Suits 32Mm Fencing

SKU: TF-STFOOT32



PRODUCT DESCRIPTION

Our Steel Fence Feet for Temporary Fencing are a high quality, heavy duty long life product. They have been designed to be strong enough for repeated use with our Temporary Fence Panels and are substantially stronger than what's typically being sold in NZ.

"Beware of lighter weight imitations, they won't last"

Temporary Fence Steel Feet Specification:

- Weight: 8.5kg
- Base: 750 L x 150 W mm / 10mm thick with 13mm holes each end
- Posts: 25mm OD - 150mm H / 2mm wall thickness
- 100mm Spacings
- Galvanising: Hot dip galvanised to min NZ standard average 42 microns