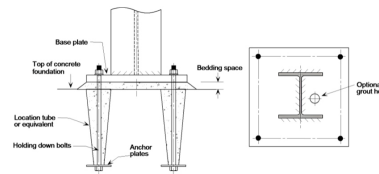


## Bolt Box - Tapered Wax Cone - 380Mm

**SKU:** 6193-TWC380

108 x 30 x 380mm long

- Used in the concrete construction industry
- Made from waxed cardboard, the cones are inserted into drilled holes or anchor bolt holes in concrete forms
- They act as a form-release agent, simplifying formwork removal post-concrete curing, and preserving concrete surface quality



## PRODUCT DESCRIPTION

In scenarios involving embedded anchor bolts or threaded rods, they prevent grout leakage, acting as a protective barrier. They also protect anchor bolt threads from contamination during the pouring process. This ensures nuts and washers can be easily threaded onto the bolts after the concrete has cured.

Process:

1. The waxed cardboard void former is placed over the bolt, standing on the plate washer
2. The cone is left in place whilst the surrounding concrete sets. This allows for the lateral, circular movement of the bolt, therefore lining up is much easier
3. Once the concrete is almost set, the cone can be twisted and removed
4. After the structure is fixed into position the void around the bolt can then be filled with grout

